

LINEAR MOTION
SYSTEM INTELLIGENT
PRODUCTS
MANUFACTURER



FPB series modules are driven by synchronous belt , can easily reach long Stroke use condition , realized big motion range application ,use aluminum made structure, max Stroke reach 3500mm, max speed up to 2000mm/s

Maximum Load

35kg

maximum speed

2000mm/s

Repeat positioning accuracy

±0.05mm

Longest travel

3500mm

FUYU TECHNOLOGY CO.,LTD

055 PRODUCT SELECTION
FU MANUAL YU

FPB

SYNCHRONOUS BELT MODULE

Low noise and lightweight



FPB30

30mm
width
3500mm
max stroke
8kg
max payload



FPB45

45mm
width
3500mm
max stroke
15kg
max payload



FPB50

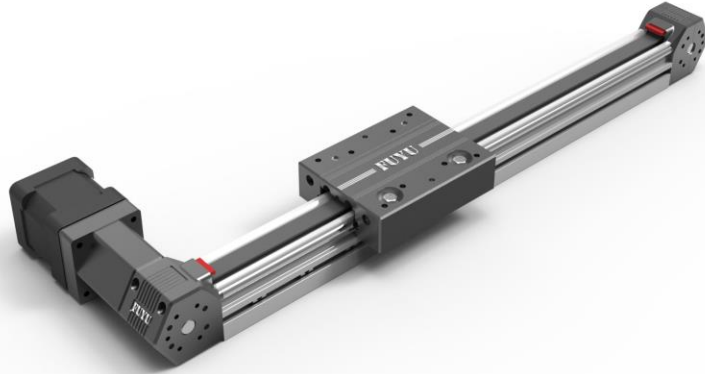
50mm
width
3500mm
max stroke
25kg
max payload



FPB60

60mm
width
3500mm
max stroke
35kg
max payload

FPB30 LINEAR GUIDE



[mm]
Effective Stroke 100~3500

[kg]
Vertical reference Loading 2

[kg]
Horizontal reference Loadings 8

FPB30-ORDERING METHOD

FPB30		E300		L		B42		S	
Belt module FPB series		Effective trip		Motor position		Brand name			
Model	Wide(mm)	Model	Stroke (mm)	Motor folding direction		Servo motor			
FPB30	30	FPB30	E100-3500	L	Motor Left	P	40:400W		
				LU	Motor Upper Left	T			
				LD	Motor Lower Left	Y			
				R	Motor Right	M			
				RU	Motor Upper Right	C			
				RD	Motor Lower Right				
						Stepping motor			
						※ B42	42X50		
							57X56		
						刹车 brake			
						Extra Enquiry If Need Brake			

FPB30-OPTIONAL ACCESSORIES

Touch screen	Controller	Limit switch	DC power model	Drive model
TPC7062HW	FSC-2A	FML-(NPN/PNP)	PMT-24V350W	FMDD50D40NOM
	FMC4030		PMT-24V100W	
			LRS-350-24	

FPB30 TECHNICAL PARAMETER

TECHNICAL PARAMETER

4250 stepper motor	[mm] Position Accuracy	±0.05			
	[mm] Lead	60			
	[kg] loadings	1KG	2KG	3KG	4KG
	Horizontal [mm/s] Speed	1000	1000	1000	1000
	Side Mounted [mm/s] Speed	1000	1000	1000	
	Vertical [mm/s] Speed	800	500		
	Down Mounted [mm/s] Speed	1000	1000	1000	1000
	noise[dB]	≤65			
	[kg] loadings	5KG	6KG	7KG	8KG
	Horizontal [mm/s] Speed	800	700	600	500
	Side Mounted [mm/s] Speed				
	Vertical [mm/s] Speed				
	Down Mounted [mm/s] Speed	800			
	noise[dB]	≤65			
[°C] Storage temperature	-15°C—+60°C				

FPB30-DIMENSIONAL DRAWING

BL MOTOR LEFT SIDE

[mm] Stroke	100	200	300	400	500	600	700	800	900	1000	1500	2000	2500	3000	3500
[mm] Linear Guide Total Length	277	377	477	577	677	777	877	977	1077	1177	1677	2177	2677	3177	3677
[kg] Weight	1.1	1.3	1.5	1.7	1.9	2.1	2.3	2.5	2.7	2.9	3.9	4.9	5.9	6.9	7.9

The installation length of nut shall be subject to the actual situation

FPB45 LINEAR GUIDE



[mm]
Effective Stroke 100~3500

[kg]
Vertical reference Loading 10

[kg]
Horizontal reference Loadings 15

FPB45-ORDERING METHOD

FPB45		E300		L		B57		S	
Belt module FPB series		Effective trip		Motor position		Brand name			
Model	Wide(mm)	Model	Stroke (mm)	Motor folding direction		Servo motor			
FPB45	45	FPB45	E100-3500	L	Motor Left	P	40:400W		
				LU	Motor Upper Left	T			
				LD	Motor Lower Left	Y			
				R	Motor Right	M			
				RU	Motor Upper Right	C			
				RD	Motor Lower Right				
						Stepping motor			
						※ B57	57X76		
						B60	60X102		
						brake			
						Extra Enquiry If Need Brake			

FPB45-OPTIONAL ACCESSORIES

Touch screen	Controller	Limit switch	DC power model	Drive model
TPC7062HW	FSC-2A	SN04-N(NPN.NO)	PMT-24V350W	FMDD50D40NOM
	FMC4030	FML-(NPN/PNP)	PMT-24V100W	
			LRS-350-24	

FPB45 直线模组-技术参数

FPB45 TECHNICAL PARAMETER

TECHNICAL PARAMETER	[mm] Position Accuracy		±0.05			
	[mm] Stroke		80			
	5776 stepper motor	[kg] loadings		5KG	10KG	15KG
		Horizontal	[mm/s] Speed	1000	800	
		Side Mounted	[mm/s] Speed			
	Vertical	[mm/s] Speed				
		noise[dB]		≤60-70		
	400W AC Servo Motor	[kg] loadings		5KG	10KG	15KG
		Horizontal	[mm/s] Speed	2000	2000	2000
		Side Mounted	[mm/s] Speed	2000		
Vertical		[mm/s] Speed	2000	2000		
noise[dB]		≤60-70				
[°C] Storage temperature		-15°C—+60°C				

FPB45-DIMENSIONAL DRAWING

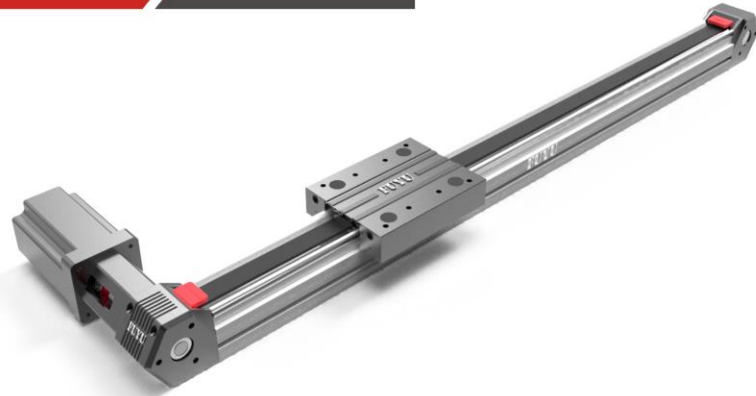
BL MOTOR LEFT SIDE

A: 尾部相邻孔间距 A: Distance between adjacent holes in tail M: 阵列数 M: Number of arrays N: 安装孔个数 N: Number of mounting holes

[mm] Stroke	100	200	300	400	500	600	700	800	900	1000	1500	2000	2500	3000	3500	
[mm] Linear Guide Total Length	5776 Stepper Motor	350	450	550	650	750	850	950	1050	1150	1250	1750	2250	2750	3250	3750
[kg] Weight	400W AC Servo Motor	4.1	4.35	4.6	4.05	5.1	5.35	5.6	5.85	6.1	6.35	7.6	8.85	10.1	11.4	12.6
		350	450	550	650	750	850	950	1050	1150	1250	1750	2250	2750	3250	3750
		4.8	5.05	5.3	5.55	5.8	6.05	6.3	6.55	6.8	7.05	8.3	9.55	10.8	12.1	13.3

The installation length of nut shall be subject to the actual situation

FPB50 LINEAR GUIDE



[mm]
Effective Stroke 100~3500

[kg]
Vertical reference Loading 15

[kg]
Horizontal reference Loadings 25

FPB50-ORDERING METHOD

FPB50		E300		L		B57		S	
Belt module FPB series		Effective trip		Motor position		Brand name		Motor position	
Model	Wide(mm)	Model	Stroke (mm)	Motor folding direction		Servo motor			
FPB50	50	FPB50	E100-3500	L	Motor Left	P	40:400W		
				LU	Motor Upper Left	T			
				LD	Motor Lower Left	Y			
				R	Motor Right	M			
				RU	Motor Upper Right	C			
				RD	Motor Lower Right				
						Stepping motor			
						※ B57	57X76		
						B60	60X102		
						brake			
						Extra Enquiry If Need Brake			

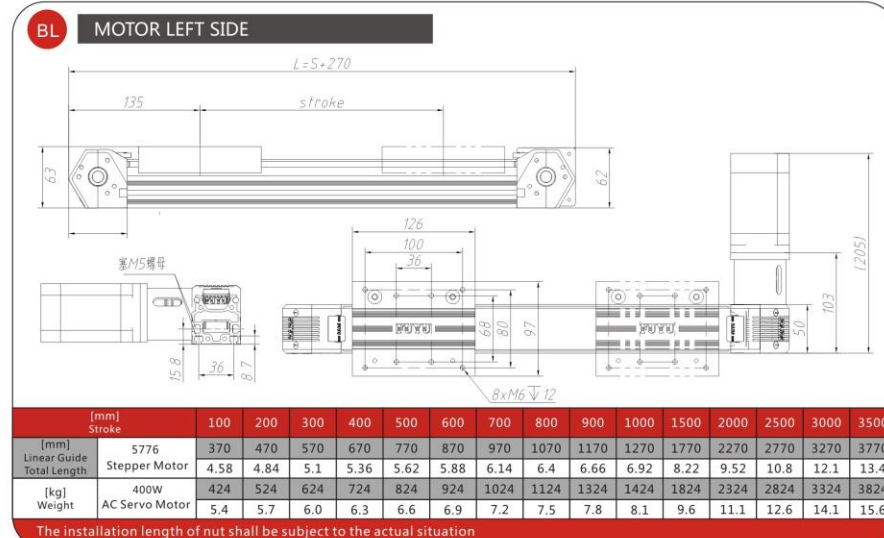
FPB50-COLLOCATION LIST

Touch screen	Controller	Limit switch	DC power model	Drive model
TPC7062HW	FSC-2A	SN04-N(NPN.NO)	PMT-24V350W	FMDD50D40NOM
	FMC4030	FML-(NPN/PNP)	PMT-24V100W	
			LRS-350-24	

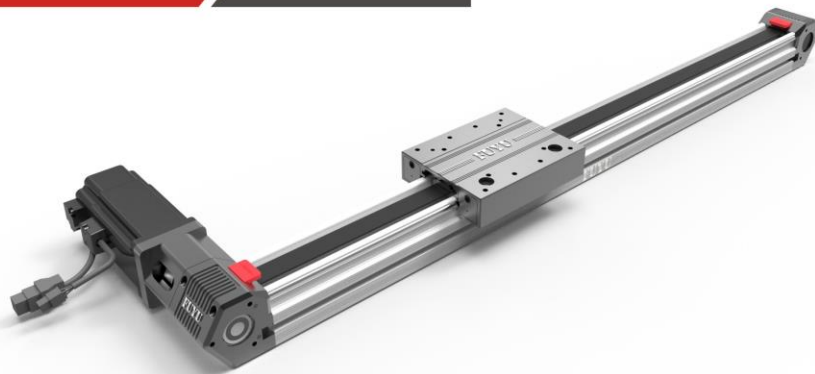
FPB50 TECHNICAL PARAMETER

TECHNICAL PARAMETER	[mm]							
	Position Accuracy		±0.05					
	Lead		95					
	5776 stepper motor	Horizontal	[kg] loadings	5KG	10KG	15KG		
			[mm/s] Speed	1000	800	500		
		Side Mounted	[mm/s] Speed	600				
		Vertical	[mm/s] Speed	600				
			noise[dB]	≤60-70				
	400W AC Servo Motor	Horizontal	[kg] loadings	5KG	10KG	15KG	20KG	25KG
			[mm/s] Speed	2000	2000	2000	2000	1500
Side Mounted		[mm/s] Speed	2000	2000				
Vertical		[mm/s] Speed	2000	2000	2000			
			noise[dB]	≤70	≤60		≤55	
		Storage temperature	-15°C—+60°C					

FPB50-DIMENSIONAL DRAWING



FPB60 LINEAR GUIDE



[mm]
Effective Stroke 100~3500

[kg]
Vertical reference Loading 20

[kg]
Horizontal reference Loadings 35

FPB60-ORDERING METHOD

※为标配电机

FPB60		E300		L		B57		S	
Belt module FPB series		Effective trip		Motor position		Brand name			
Model	Wide(mm)	Model	Stroke (mm)	Motor folding direction		Servo motor			
FPB60	60	FPB60	E100-3500	L	Motor Left	P	40:400W		
				LU	Motor Upper Left	T			
				LD	Motor Lower Left	Y			
				R	Motor Right	M			
				RU	Motor Upper Right	C			
				RD	Motor Lower Right				
						Stepping motor			
						B57	57X76		
						※ B60	60X102		
						brake			
						Extra Enquiry If Need Brake			

FPB60-OPTIONAL ACCESSORIES

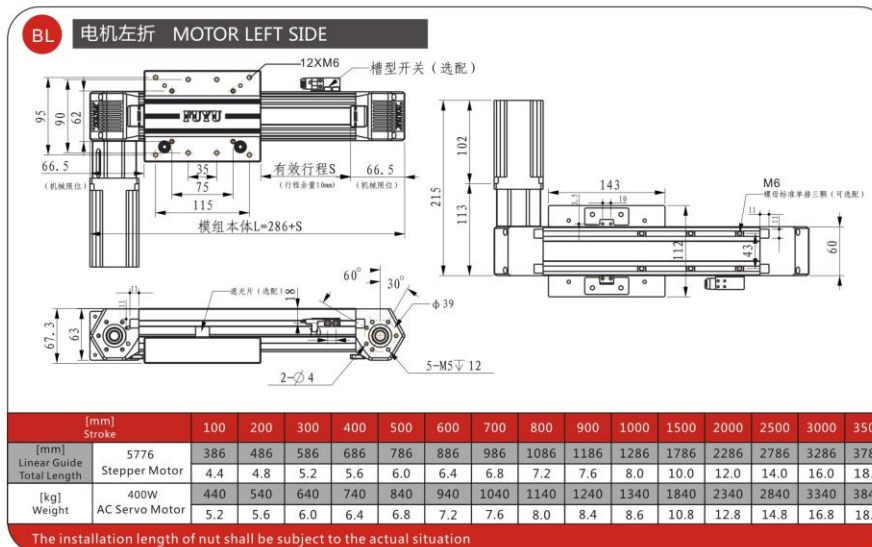
Touch screen	Controller	Limit switch	DC power model	Drive model
TPC7062HW	FSC-2A	SN04-N(NPN.NO)	PMT-24V350W	FMDD50D40NOM
	FMC4030	FML-(NPN/PNP)	PMT-24V100W	
			LRS-350-24	

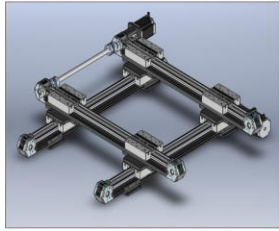
FPB60 TECHNICAL PARAMETER

TECHNICAL PARAMETER

5776 stepper motor	[mm] Position Accuracy		±0.05						
	[mm] Stroke		95						
	Horizontal	[kg] loadings	5KG	10KG	15KG	20KG			
		[mm/s] Speed	1000	1000	1000	500			
		[mm/s] Speed	800						
	Side Mounted	[mm/s] Speed	800						
Vertical	[mm/s] Speed	800							
noise[dB]		≤70							
400W AC Servo Motor	[kg] loadings		5KG	10KG	15KG	20KG	25KG	30KG	35KG
	Horizontal	[mm/s] Speed	2000	2000	2000	2000	2000	2000	2000
		[mm/s] Speed	2000	2000	2000				
		[mm/s] Speed	2000	2000	2000	2000			
	Side Mounted	[mm/s] Speed	2000	2000	2000				
	Vertical	[mm/s] Speed	2000	2000	2000	2000			
noise[dB]		≤70							
[°C] Storage temperature		-15°C—+60°C							

FPB60-DIMENSIONAL DRAWING





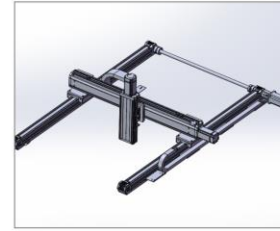
FPB45 XY-S



FPB50



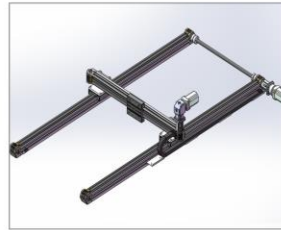
FPB60 XY-T



FPB60-FTH12 XYZ-L



FPB60 XY-T



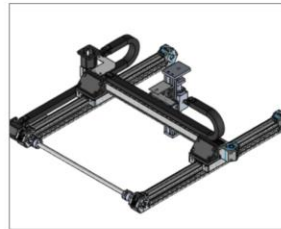
FPB60XY-H2



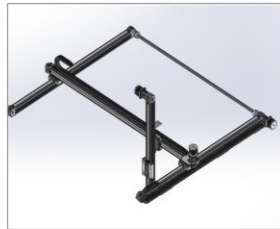
FPB60-XY



FPB45 XYZ



FPB45XYZ-L



FPB50 XYZ-L



FPB50-FSK40-XYZ



FPB60 XYZ-L



FPB60 XYZ-L